

HOW TO READ FACTORY DATE CODES

either considered a 1970, 1970 1/2 or a 1970 3/4 built vehicle depending on whether it was built before January 1st, after January 1st or after normal production for that model year ended according to law, but for some reason continued.

- 1970 are cars built from the start of the model year until January 1st.
- 1970 1/2 are cars built after January 1st until the end of the model year according to law.
- 1970 3/4 are cars built after the end of production of the model year. Usually when there is a late introduction of the year's model due to complete styling changes.

This information is needed if you are going to decipher what the hieroglyphics of the Date Codes mean, in order to correctly assemble the NOS (New Old Stock) parts needed to do what the Chrysler hobby is referring to as an *Original Restored Certified* Car.



Because model year production starts in the "Third Quarter" (1969 model production begins in '68) the correct spark plug wire's Alphabet/Numerical four digit Date Code would begin in the third quarter of 1968 and end in the second quarter of 1969. Sometimes if a part is left over from the second quarter it will be used until it is depleted. So it is possible that second quarter parts were installed on very early models for that year. It is also possible that mixed sets (3rd and 1st Quarter date coded spark plug wires were used on the same engine from the factory).

SPARK PLUG DATE CODES			
Vendor Code	GM or AATH	GH	Year
H 3Q 68	Third Quarter 1968	H 4Q 68	Fourth Quarter 1968
H 1Q 69	First Quarter 1969	H 2Q 69	Second Quarter 1969
GH 2 73	Second Quarter 1973		

The factory used two ways to Date Code spark plug wires because of different vendors. You can find the correct spark plug wires for your year car using these date codes, by substituting the last two digits for the year you need.



Alternator Date Codes uses a two digit numerical code that is the last two numbers in the year - 69 for 1969 - in a circle. There are twelve sections on the outer rim of the circle. Depending on how many sections have "raised dots" will designate the month. Early production Date Codes would probably start in the eighth or ninth month.

ALTERNATOR DATE CODES			
Raised Dots Per Section	Month	Raised Dots Per Section	Month
1	January	7	July
2	February	8	August
3	March	9	September
4	April	10	October
5	May	11	November
6	June	12	December

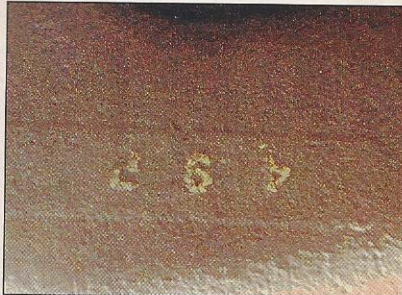


Part of what is being covered here cannot be fully integrated because you need a factory parts book for the year and model of the vehicle to determine when exact changes were made for each car line. What is intended here is to tell you how to read the parts date codes, so that you understand what to look for when searching through mountains of NOS or used parts.

Engine compartment parts date coding can either be numerical or alphabetical/numerical, but they will never be a combination of both styles for the same type of part. Engine accessory parts are either date coded by the day, week or month but never a combination.

Chrysler usually started a model year in the *Third Quarter*. What this means is an early 1969 model would have date coded parts with a 1968 parts reference. Sometimes even date coded as early as the "Second Quarter" can be found on very early models - usually those with a September or before production date. Model year date coding ends in the *Second Quarter*.

There are two ways to read the Exhaust Manifold. The easiest way is if the manifold has an actual date like - 4 • 11 • 69. While the more complicated way is the three digit monthly numerical-alphabet date code, like the one shown - 49P which means April of 1969.



EXHAUST MANIFOLD DATE CODES			
Code	Month	Year	Letter
19 P	1	1969	All
29 P	2	1969	All
39 P	3	1969	All
49 P	4	1969	All
59 P	5	1969	All
69 P	6	1969	All
79 P	7	1969	All
89 P	8	1969	All
99 P	9	1969	All

The monthly numerical-alphabet date code system for exhaust manifolds is the same for all years up to 1979. Only the last numerical digit will change to represent the manufacturing year.

The date code for fuel lines is a six digit *daily* numerical number. The reason for the additional digit is to identify it on the assembly line from the power steering low pressure and high pressure hoses., which carry a five and four digit date code number respectively.



FUEL LINE DATE CODES

Code	Meaning	
05209	52nd Day of 1969	
KV —	No Date Code	
KV	No Date Code	
Production Day	Ass. Line Code	Year Last #
052	0	69

For a quick reference of Assembly Line codes for neophrem flammable liquid hoses remember this:

- Fuel Line the 4th digit is "0" zero.
- Low Pressure Hose the 1st digit is "0" zero.
- High Pressure Hose has "No" additional code.



[Above] The power steering's Low Pressure Hose has a five digit "daily" numerical date code - 01039 for the 103rd day of 1969. The first digit "0" represents the assembly line code.



[Right] The High Pressure Power Steering Hose uses a four digit "daily" numerical date code that is stamped into the metal portion after the bend before it fits over the high pressure rubber hose.

POWER STEERING HIGH PRESSURE HOSE DATE CODES

Code	Meaning
049 9	49th Day of 1969
160 9	160th Day of 1969
049 1	49th Day of 1971
Day Code First Three Nos.	Year Last No.
160	69

POWER STEERING LOW PRESSURE HOSE DATE CODES

Code	Meaning	
01039	103rd Day of 1969	
01609	160th Day of 1969	
01491	149th Day of 1971	
Ass. Line Code	Day Code Numbers	Year Last No.
0	103	69



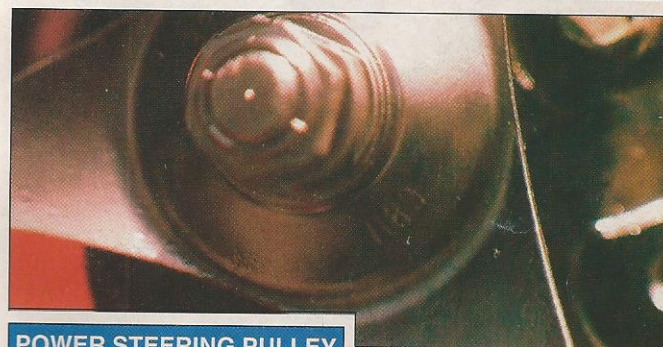
After the part number on the power steering belt is a nine digit Vendor Date Code - 42332 0229. The first five numbers represents the actual vendor while the last four digits of this number are the Date Code you need to know. These last four numbers are given in weekly terms - 0229 - representing the the 22nd Week of 1969. With the date code represented by a 52 week schedule the first of these four digits represents the assembly line code.

POWER STEERING BELT DATE CODES

Code	Month	
0229	22nd Week 1969	
0321	32nd Week 1971	
0423	42nd Week 1973	
Ass. Line Code	Week Code	Year Last No.
0	22	69

FAN-ALTERNATOR BELT DATE CODES

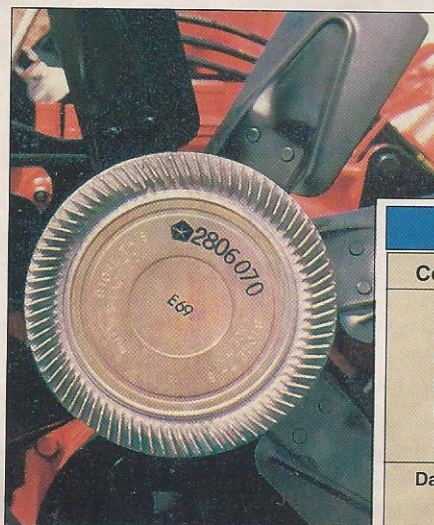
Code	Month
0229	22nd Week 1969
0321	32nd Week 1971
0423	42nd Week 1973
Ass. Line Code	Week Code Year Last No.
0	22 69



POWER STEERING PULLEY DATE CODES

Code	Meaning
1189	118th Day of 1969
1320	132nd Day of 1970
0491	49th Day of 1971
Day Code First Three Nos.	Year Last No.
118	69

The power steering pulley has a four digit daily numerical date code - 1189 which means the 118th day of 1969. You can check for a correct year pulley with the same day, say 1970 by 1180 meaning the 118th day of 1970.



The 7-blade Viscous Drive Fan used with heavy-duty cooling systems uses a three digit monthly alphabet-numerical date code that looks like this "E69" - which means May of 1969. Just follow this example and you can match up a fan to your

VISCOUS DRIVE FAN DATE CODES

Code	Month	Code	Month
A	January	G	July
B	February	H	August
C	March	J	September
D	April	K	October
E	May	L	November
F	June	M	December
Date Code	Mon. Code	Year	Meaning
E69	E	69	May 1969