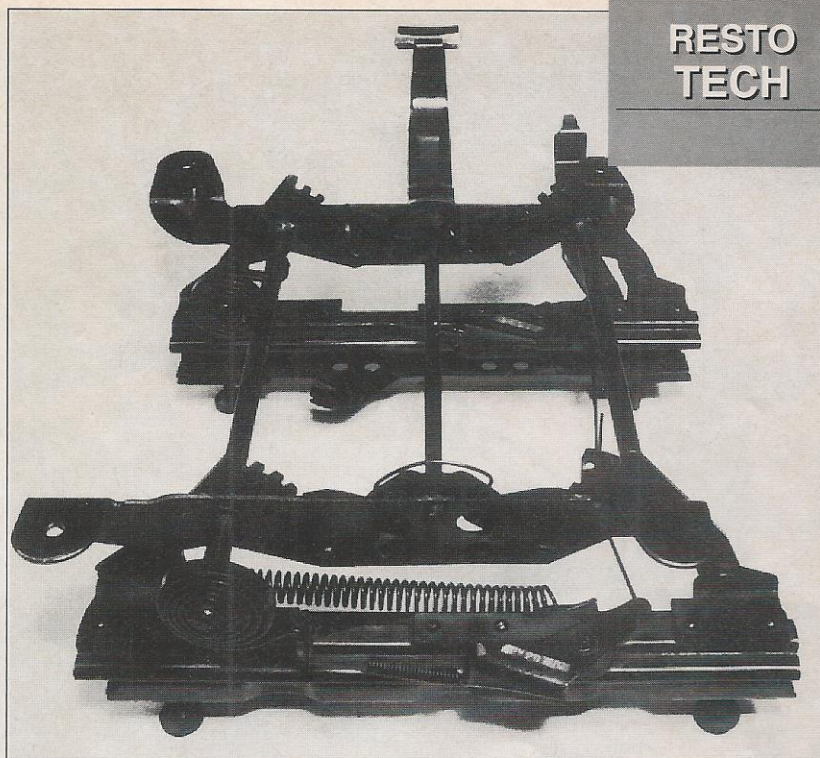


When the majority of us think of '60s muscle cars our first thoughts normally turn to those early stripped-down, over-powering, ground-pounders which made their reputations on the drag strips, city streets and back road quarter miles across the country. These are the cars we will always remember as the *true* muscle cars. Yet, some were equipped with creature comforts.

One of the lesser known of these options is the manual-tilt bucket seat adjuster. This option was listed under several names; Manual-Tilt Bucket Seat Adjuster, Manual 6-way Seat Adjuster, Comfort Position manual 6-way Seat Adjuster and the Comfort Position 6-way Seat Adjuster. Its first appearance was in 1969 on the B-Body; then it was available in 1970 and '71 on both B- and E-bodies. After '71, the \$33 option (C62) was discontinued.

Although not infinitely adjustable, like a six-way electric seat, it did offer four positive lock positions both at the front and rear of the tilt mechanisms. Thirty-two possible combinations and it could be



GETTIN' FRAMED

GETTING ON TRACK WITH YOUR BASIC SIX-WAY MANUAL ADJUSTABLE SEAT TRACK

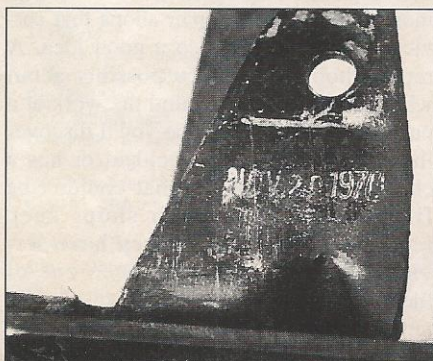
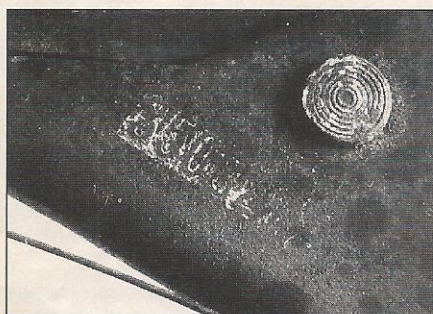
by Darrel Arment
PHOTOGRAPHY BY AUTHOR

raised or lowered a total of 1.5". In addition to the normal fore and aft movement of a manual seat, the tilt and height adjustments are controlled by a lever located at the left side center of the seat cushion. To activate the front portion of the height adjustment you push down on the front part of the activating lever. To activate the rear portion, you push down on the rear of the lever. After choosing the activation required you simply use your body weight to rock the seat into the desired position and release the lever. Fore/aft movement is adjusted in the same manor used with any mechanical seat. Height adjustments are made easy by two powerful counterbalance springs.

Chrysler used four different Six-Way Adjustable Seat options. The 1971 B-body seat frame will not fit the 1968-70 B-body seat or floorpan. The '71 used a narrower seat by about a .50". The track is about 1.75" narrower.

The seat frame here was produced on November 20, 1970 according to the date stamped on the frame. The part number stamped on the frame is 3508217. This makes it a B-body frame.cce

This is a 1971 B-Body seat frame by its November 20, 1970 production date and what's left of its 3508217 part number.



SIX-WAY MANUAL ADJUSTABLE SEAT OPTION (C62)

Year	Body	Code	Part Number	Price
'69	B	C62	N/A	\$33.30
'70	B	C62	3454 445	\$33.30
'71	B	C62	3508 217	\$35.00
'70	E	C62	3454 443	\$33.30
'71	E	C62	3454 443	\$32.20

The 1971 B-Body seat frame will not fit the 1968 through 1970 B-Body seat or floorpan. The '71 used a narrower seat by about 1/2 inch and the track is about 1 3/4 inch narrower. Although the 1969 B-Body seat frame part number is not listed, there is a part number for it.

Source . . .

Mo-Par City
Dept. CCE
Route 1
Oregon, IL 61061
(815) 732-7751